

**Cut out
eye hole**

**Cut out
eye hole**

**Cut out
mouth/nose hole**

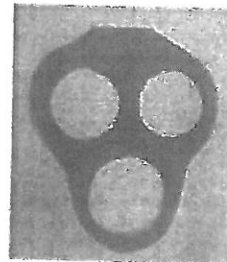
How to make a model gas mask

Materials - You will need the following to make your mask:

- black or olive green cardex (cardboard) - you will need one piece A3 size
- cellophane (any colour)
- bubble wrap
- hat or shirring elastic
- sticky tape
- scissors

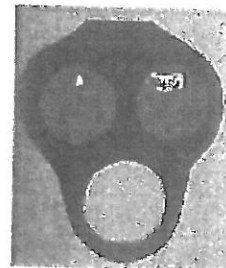
Step 1: Mask outline

- Download the mask outline and print it.
- Cut around the mask outline and cut out the mouth/nose hole and eye holes.
- Trace the outline, mouth/nose hole and eye holes onto cardex using a pencil
- Cut out mask. (See picture opposite.)



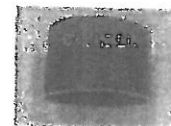
Step 2: Cellophane for eye holes

- Cut two circles of cellophane each with a radius of 4.75cm.
- Sticky tape cellophane over the back of each eye hole. (See picture opposite.)



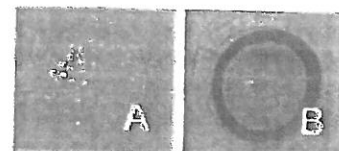
Step 3: Cardex for nose filter

- Cut a rectangular piece of cardex 30cm long by 5.5cm wide. (See picture opposite.)
- Make into a cylinder, overlapping by approximately 3cm. (See picture opposite.)
- Sticky tape together. (See picture opposite) The nose piece should fit the mouth/nose hole, not be bigger or smaller than it.



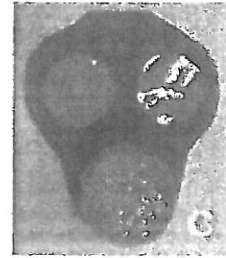
Step 4: Completing the filter and attaching it to the mask

- Cut two circles of bubblewrap each with a radius of 5.25cm.
- Put small pieces of sticky tape around the edge



of the bubblewrap circles. (See picture A opposite.)

- Place the nose piece cylinder in the middle of one of the bubblewrap circles (see picture B opposite) and gently pull the sticky tape up the sides of the nose piece. Repeat this procedure at the other end of the nose piece.
- Place the completed nose piece on the front of the gas mask over the mouth/nose hole, and sticky tape in place. It looks neater to have the sticky tape on the back of the mask.
- Picture C opposite shows the front of the mask with the nose piece in place.



Step 5: Attaching the elastic

- Cut a piece of elastic 15 cm long. Sticky tape the elastic to the back of the mask halfway up the edge of the eye holes. (See picture opposite showing the back of the mask with elastic attached.)

